

tineco

Instruction Manual

Cordless hard floor cleaner

iFLOOR

BC



CONTENTS

- 1.Important Safety Instructions 01
- 2.Product Components 05
- 3.Accessory Instructions..... 06
- 4.Assembly 07
- 5.Product Operation 08
- 6.Daily Maintenance 12
- 7.Trouble Shooting 16
- 8.Specification 17
- 9.Warranty 18

Important Safety Instructions

SAVE THESE INSTRUCTIONS

Household use only.

When using an electrical appliance, basic precautions should always be followed, including the following:

READ ALL INSTRUCTIONS BEFORE USING (THIS APPLIANCE), Failure to follow the warnings and instructions may result in electric shock, fire and/or serious injury.

WARNING—To reduce the risk of fire, electric shock, or injury:

1. Use only indoors, on non-carpeted floor surfaces such as vinyl, tile, sealed wood, etc. Be careful not to run over loose objects or edges of area rugs. Stalling the brush may result in premature belt failure.
2. Do not allow to be used as a toy. Close attention is necessary when used by or near children, pets or plants.
3. Use only as described in this manual. Use only manufacturer's recommended attachments.
4. Do not use with damaged cord or plug. If appliance is not working as it should, has been dropped, damaged, left outdoors, or dropped into water, return it to a service center.
5. Do not handle charger, including charger plug, and charger terminals with wet hands.
6. Do not put any object into openings. Do not use with any opening blocked; keep free of dust, lint, hair, and anything that may reduce air flow.
7. Keep hair, loose clothing, fingers, and all parts of body away from openings and moving parts.
8. Use extra care when cleaning on stairs.
9. Do not use to pick up flammable or combustible liquids, such as gasoline, or use in areas where they may be present.
10. Do not pick up anything that is burning or smoking, such as cigarettes, matches, or hot ashes.
11. Do not use without filter.
12. Prevent unintentional starting. Ensure the switch is in the off-position before picking up or carrying the appliance. Carrying the appliance with your finger on the switch or energizing appliance that have the switch on invites accidents.

13. Always switch off the appliance before making any adjustments, changing accessories, or storing appliance. Such preventive safety measures reduce the risk of starting the appliance accidentally.
14. Recharge only with the charger specified by TINECO. A charger that is suitable for one type of battery pack may create a risk of fire when used with another battery pack.
15. Use appliances only with specifically designated TINECO battery packs. Use of any other battery packs may create a risk of injury and fire.
16. Under abusive conditions, liquid may be ejected from the battery; avoid contact. If contact accidentally occurs, flush with water. If liquid contacts eyes, additionally seek medical help. Liquid ejected from the battery may cause irritation or burns.
17. Do not use a battery pack or appliance that is damaged or modified. Damaged or modified batteries may exhibit unpredictable behavior resulting in fire, explosion or risk of injury.
18. Do not expose a battery pack or appliance to fire or excessive temperature. Exposure to fire or temperature above 130°C (266°F) may cause explosion.
19. Follow all charging instructions and do not charge the battery pack or appliance outside of the temperature range specified in the instructions. Charging improperly or at temperatures outside of the specified range may damage the battery and increase the risk of fire.
20. Have servicing performed by a qualified repair person using only identical replacement parts. This will ensure that the safety of the product is maintained.
21. Do not modify or attempt to repair the appliance or the battery pack except as indicated in the instructions for use and care.
22. Always turn off this appliance before connecting or disconnecting motorized nozzle.
23. Do not charge or store the appliance outdoors or inside the car. Only charge, store or use the battery in a dry indoor area where the temperature is higher than 4°C (39.2°F) but lower than 40°C (104°F). The charger is for indoor use only.
24. Do not use to pick up ultrafine particles, such as lime, cement, sawdust, gypsum powder, or ashes.
25. Do not use to pick up sharp objects, such as metallic nails, pieces of glass, metal paper clips, or pins.

26. Do not use to pick up hazardous material and chemicals, such as solvent, drain cleaner, strong acids or strong alkali.
27. Stop using immediately if the machine is overheating, making unusual noises, issuing unusual odor, performing low suction, or leaks electricity.
28. Turn cleaner OFF and disconnect from electrical outlet in case of long-term storage.
29. Always clean dirty water tank after each use to avoid potential blockage, which may result to low suction power, motor overheating or reduce the service life.
30. Store appropriately indoors in a dry place after use.
31. Do not place or submerge machine in standing water or try to clean flooded areas.
32. All date and technical instruction of this manual based on results from lab tests of Tineco or designated third party. The company reserves all rights for final explanation.
33. Do not use the appliance when the water depth is more than 5mm above the surface.

Range of Usage

- The iFloor cordless hard floor cleaner is to be used on indoors hard floor, such as vinyl, tile, sealed wood, etc. Use on a rough surface may not get the best performance.
- Keep your appliance away from heat sources, such as fireplace or heater, to avoid casing deformation.
- Do not use to pick up flammable or combustible liquids, ultrafine particles, sharp objects, hazardous material, chemicals or anything that is burning or smoking, as described above.

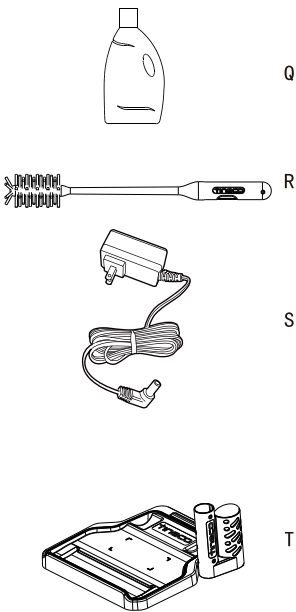
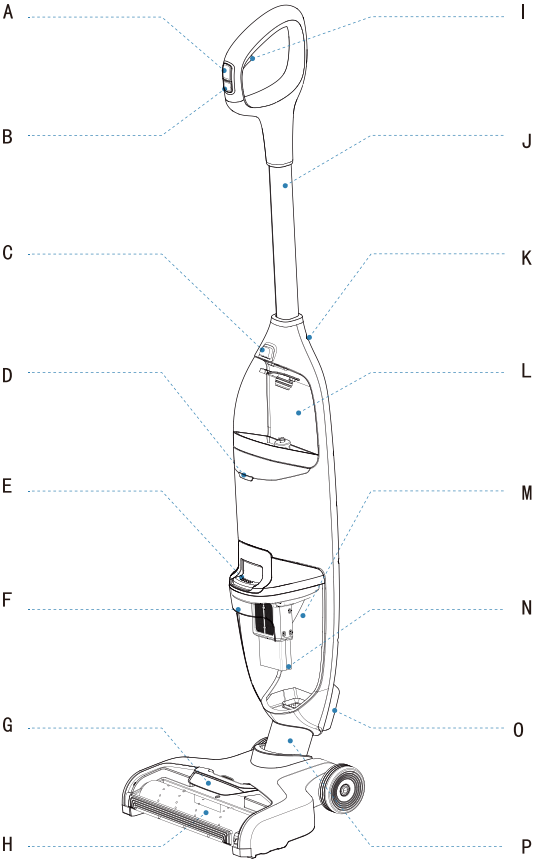
About Cleaning Solution

- A large amount of cleaning solution entering into the motor may cause danger.
- Add solution as instructed in the Product Operation. We recommend using the provided cleaning solution. Do not use the product with acidic, alkaline solution or any substances harmful to the environment.
- Keep out of reach of children. If any solution gets into the eyes, immediately flush them with clean water. If any solution be swallowed by accident, seek medical care immediately.
- Dirty water and solution disposal should comply with local environmental regulations.

About the Cleaner

- Do not modify or attempt to repair the cleaner except as indicated in the instructions for operating and cleaning.
- Charge the machine with Tineco iFloor adaptor. Input Voltage: AC 100-240V. Both high and low voltages can damage the adaptor or the machine, even cause danger to the user.
- Use extra care when cleaning on stairs.
- Ensure that the Power Switch is in the OFF-position before picking up or carrying the machine. Do not lay flat or lean down the machine to prevent dirty water from entering into the motor.
- To avoid being tripped accidentally , please put away the unit on the storage tray near wall.
- Always install the tanks rightly before use.
- Do not allow the appliance or charger to get wet to avoid risk of fire or injury caused by short circuit.

Product Components



- | | |
|------------------------------------|---------------------------|
| A. Switch button | I. Solution trigger |
| B. Spot button | J. Handle |
| C. Clean water tank release button | K. Handle fix screw |
| D. Indicator light | L. Clean water tank (CWT) |
| E. Dirty water tank release button | M. Dirty water tank (DWT) |
| F. Dirty water tank Handle | N. Floater |
| G. Brush roll cover | O. Air outlet cover |
| H. Brush roll | P. Brush rotator |

- Q. Deodorizing & sanitizing solution
- R. 3 in 1 cleaning tool
- S. Charger adaptor
- T. Self-cleaning storage tray

Accessory Instructions

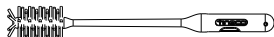


Deodorizing & sanitizing solution

Remove dirt, grime, grease and tough stains from most types of hard surfaces, vinyl, tile, sealed wood, etc.

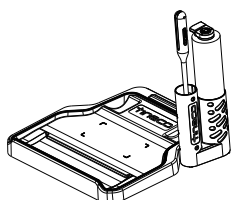
Always use Tineco solution in your machine.

Add one bottle cap of solution to the water at a time.



3 in 1 cleaning tool

A full brush to clean DWT, brush chamber and the opening; the end with bristle to remove dirt and mud on the roller and DWT; the end with small blade to remove hair and debris wrapped around the roller.



Self-cleaning Storage Tray

Place the appliance on the storage tray vertically.

Store the 3-in-1 cleaning tool and the brush roll in the tool caddy.

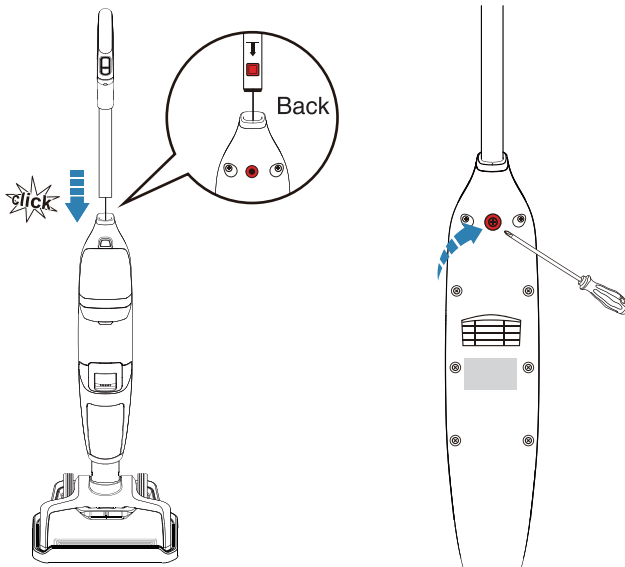
*Actual accessories may vary from shown or change without notice. Available accessories may vary by market.

Assembly

Handle Assembly/Disassembly

Note :

For water tank assembly and brush assembly, please refer to Product Operation and Daily Maintenance .



To assemble the handle, insert it into the unit base until you hear a click.

In case of product returning, please disassemble the handle, first remove the screw with screwdriver, then press the spring located with a tool to release the handle. Lift the released handle from the unit.

Product Operation

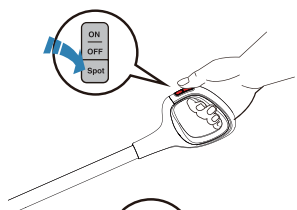
Start To Work

Note :

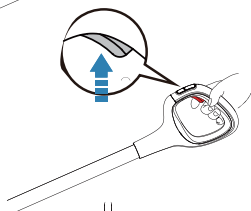
Before the first use, please charge the appliance for 3-4 hours (refer to “Charging Instructions” for details).

*Based on results from Tineco lab tests. Lab temperature 39.2°F (4℃) ~ 104°F (40℃)

Use directly when you just need to absorb water; add water/solution when you need to deep clean the floor (refer to “Filling Clean Water Tank Operation” for details).



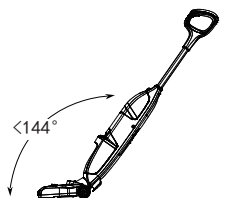
Switch ON to start the machine.
Press Spot button for spot mode to remove tough spots and stains with higher speed and stronger spray.



Squeeze the Solution trigger when moving backward to spray liquid as needed.



Place the appliance on the storage tray vertically after use.



Do not recline the appliance over than 144° to against water leakage.

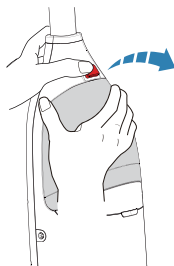
Note:

*Do not use for absorbing foam liquid.

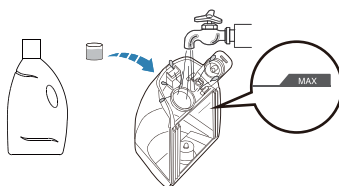
*When cleaning excessively dirty, press Spot button for Spot mode.

Product Operation

Filling Clean Water Tank



Press clean water tank release button to remove it from the unit.

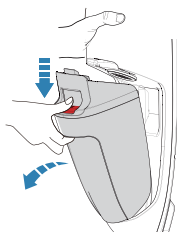


Open the tank cap, fill the tank with warm tap water (140°F/60°C MAX) to Max line. When need deep cleaning, add one bottle cap of solution to the water, then close the cap tightly.

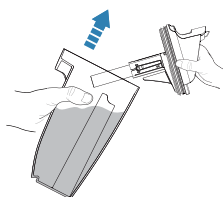


Place back the tank until you hear a click.

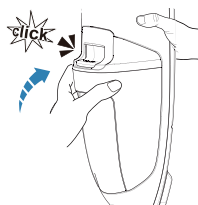
Empty Dirt Water Tank



Press dirty water tank release button to remove it from the unit.



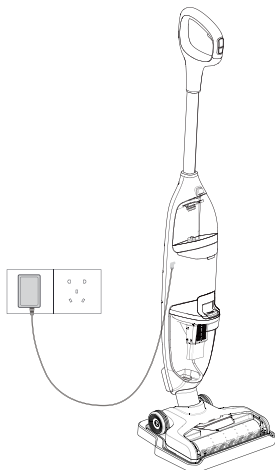
Pour dirty water and debris out.



Place back the tank until you hear a click.

Product Operation

Charging Instructions



The indicator light will flash red when it's power is low. Please charge it.

1. Before charging the unit, please ensure that all water has been removed from the clean and dirty water tanks and the machine is dry.
2. To charge the unit, connect the external charger cord to the unit and plug into the wall outlet.
3. To avoid being tripped accidentally, please put away the unit on the storage tray near wall during charging.

Warning :

- Charge the unit only with the adaptor from TINECO.
- For optimal performance, the unit must be charged every 3 months. It may take 3 -4 hours for a full charge.
- Store appropriately indoors in a dry place. Do not expose machine to sunlight or freezing temperature. Recommended temperature range: 39.2°F(4

°C) ~ 104°F(40 °C).

Product Operation

Indicator Light

Working



Solid blue light: Normal mode



Flashing blue light: Spot mode



Flashing red light: The appliance/brush roll is blocked, or out of power

During Charging



Breathing blue light.

Charging Complete



Solid blue light for 2 minutes then turns off.



***Battery Disposal Warning:**

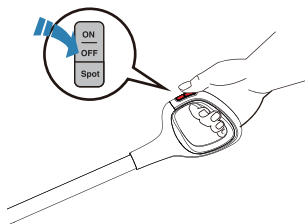
- Remove the built-in battery before disposing.
- Switch OFF and disconnect plug from electrical outlet before removing the battery.
- Dispose of batteries properly and safely. DO NOT dispose of battery in fire, water, soil or trash compactor.
- Leaks from battery cells can occur under extreme conditions. If any liquid gets on the skin wash quickly with soap and water. If any liquid gets into the eyes, do not rub eyes, immediately flush them with clean water continuously for a minimum of 15 minutes. Seek medical attention immediately.

Daily Maintenance

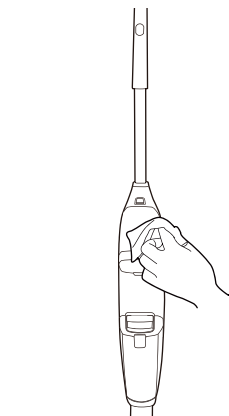
Note:

- In order to maintain machine performance, it is recommended that you clean the components regularly.
- For optimal performance and prevent odor , always **clean** and **dry** DWT, floater, filters, pre filter, brush roll, brush roll cover after each use.

Main Body



To reduce the risk of injury, switch off and disconnect plug from electrical outlet before performing maintenance.



Use cloth to clean the surface with neutral detergent. The cloth should be dry to prevent water from entering the appliance.

Note:

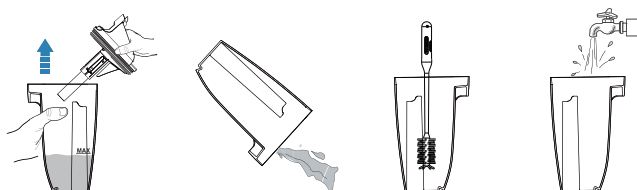
After performing maintenance, place back the appliance on the storage tray vertically. Do not expose machine to direct sunlight, and store it appropriately indoors in a dry place.

Daily Maintenance

Dirty Water Tank

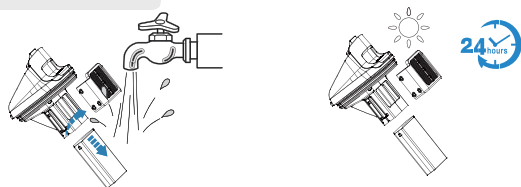
Note:

When dirty water reaches MAX line, the floater will block off your DWT creating a high pitched sound indicating it's time to switch OFF the appliance.



Switch OFF then pull up the tank lid to empty the DWT. Use 3 in 1 cleaning tool to remove remaining debris. Rinse the inside of the dirty water tank.

Filter & Floater

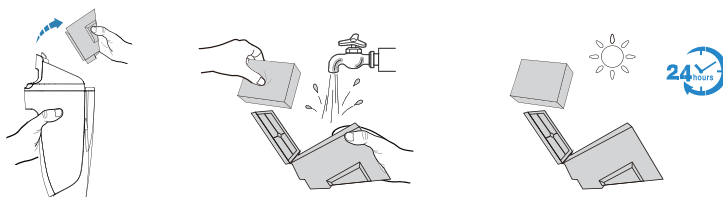


Note:

If the filter and the floater have been blocked, rinse with water.

Take off the filter from the tank lid, pull out the floater, and rinse them with water.

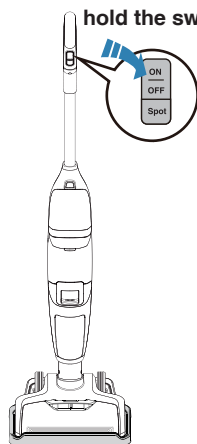
Pre-filter



Grasp recessed area on each side of the pre-filter and pull upward to remove, then rinse with water. Let it dry out before placing back into the lid of the dirty water tank .

Daily Maintenance

Brush roll self-cleaning



Note:

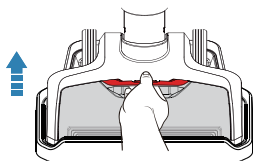
- For optimal performance, use quick self-cleaning function as often as needed.
- Please empty the dirty water tank before and after self-cleaning.

Place unit on storage tray. The clean water tank should be at least 1/3 full of water. Press and hold the switch button for 3 seconds to start the brush roll self-cleaning mode. The appliance will automatically shut off once finished. The entire self-cleaning process takes about 40 seconds.

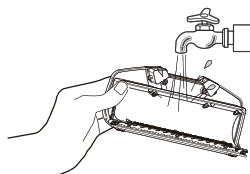
Brush Roll Cover

Note:

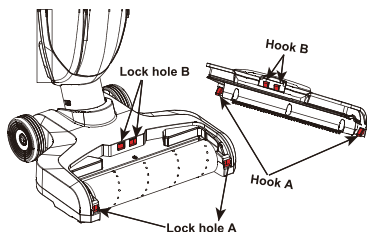
For optimal performance, please clean the brush roll cover periodically.



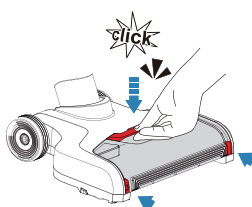
Grab the front handle while pressing the button and pull upward to remove.



Rinse with water



Press hook A into the lock hole A, then Press hook B into the lock hole B.



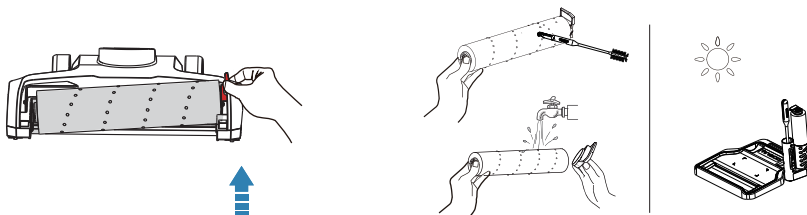
Always latch brush cover into right place to avoid suction loss or water leak.

Daily Maintenance

Brush Roll

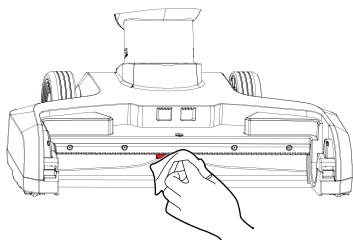
Note:

For optimal performance, please clean the brush roll after each use.

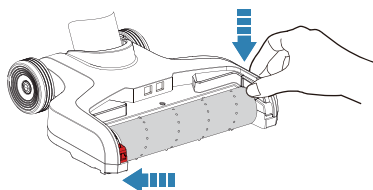


Remove the brush roll by grabbing the brush roll tab and pulling upward.

Take off the brush roll tab. Remove the hair and debris wrapped around the roller with included 3 in 1 cleaning tool. Rinse with water. Put the brush roll back into the tool caddy and let it dry out before reinstalling.



Remove hair and debris from the brush roll chamber and the opening with tissue or cloth.



Put back brush roll by inserting the brush roll end into the left side of the foot, then lock the pull tab into place by pressing downward.

Trouble Shooting

Problem	Possible cause	Solution
Solid red light	Device overheating	Let your device cool down before using
The light flashes alternatively blue and red	Defective product	Please contact us at support@tineco.com for further support
Loss of suction power	Brush malfunction	Make sure brush roll and brush roll cover installed correctly, clean brush roll and debris channel
	The sponge for pre-filter is dirty	Clean the pre-filter
	The DWT has picked up maximum amount of dirty water and has reached MAX line	Empty the dirty water then reinstall the DWT
	Brush cover is not latched in place	Reinstall brush cover
	The debris channel or the airway is blocked	Remove blockages
Machine makes unusual noises during normal usage	The debris channel or the airway is blocked	Remove blockages
	The DWT has picked up maximum amount of dirty water and has reached MAX line	Empty the dirty water then reinstall the DWT
Machine won't charge	The external charger cord not correctly plugged	Unplug the charger, then plug again into the machine and then into the wall outlet
Machine won't spray	The CWT may be empty	Refill CWT
	The CWT may not be installed correctly	Install the CWT correctly
Air outlet cover is leaking water	Then floater or the sponge for pre-filter may not be installed	Install the floater and the sponge correctly
	The DWT has picked up maximum amount of dirty water and has reached MAX line	Empty the dirty water then reinstall the DWT
	The sponge for Pre-filter is moist	Let the sponge dry out
	The floater is blocked	Remove blockages

Note:

Please make sure your machine has sufficient power. In any other case or if the solution explained above did not solve the problem, please contact us at support@tineco.com

Specification

Model	iFloor
Charging Input	100-240V
Voltage	22.2V 2500mAH Li-ion
Rated Power	120W
Running Time	22mins
Charging Time	3-4hrs
Water Flow Rate	Normal: about 40ml/min Spot: 220ml/min
CWT Capacity	17.92FL.OZ.(530ML)
DWT Capacity	13.53FL.OZ.(400ML)
Waterproof	IPX4

tineco

Live Easy
Enjoy Life



tinecoglobal



Contact us - We'll get back to you within 1 business day.



Web: www.tineco.com

Email: support@tineco.com

US Service Call: +1 (855) 292-8864

Service Hours: Mon. - Fri. 9am - 6pm (CST)